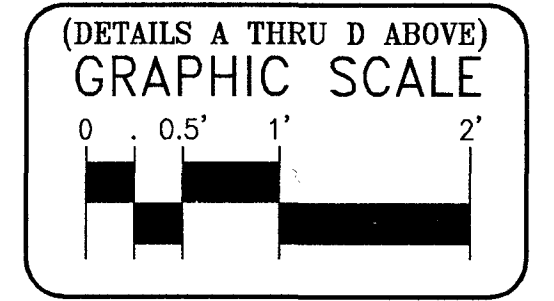
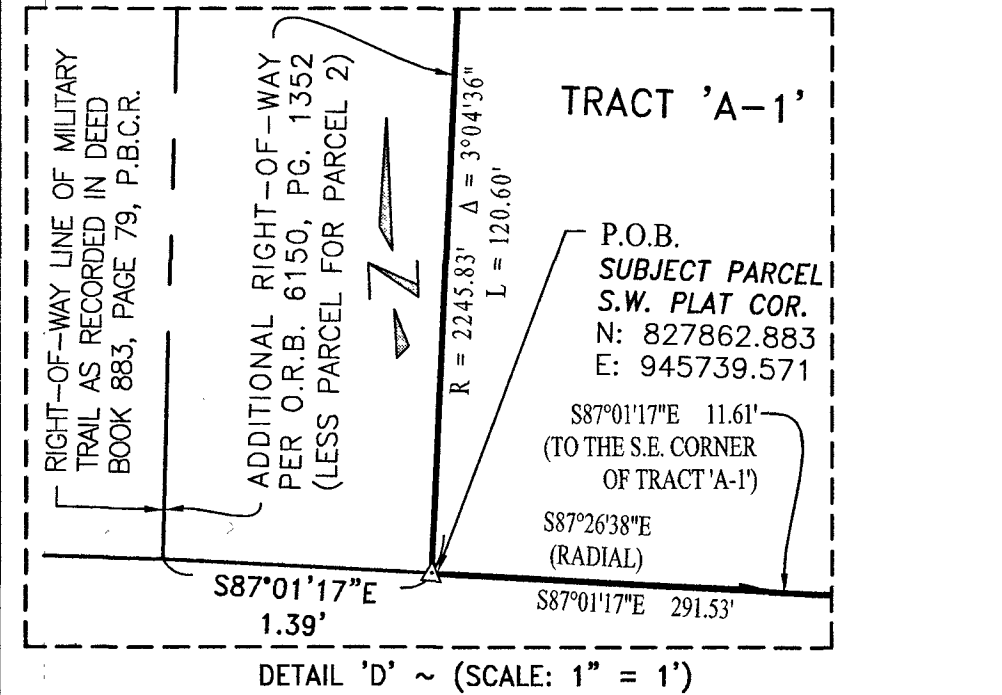
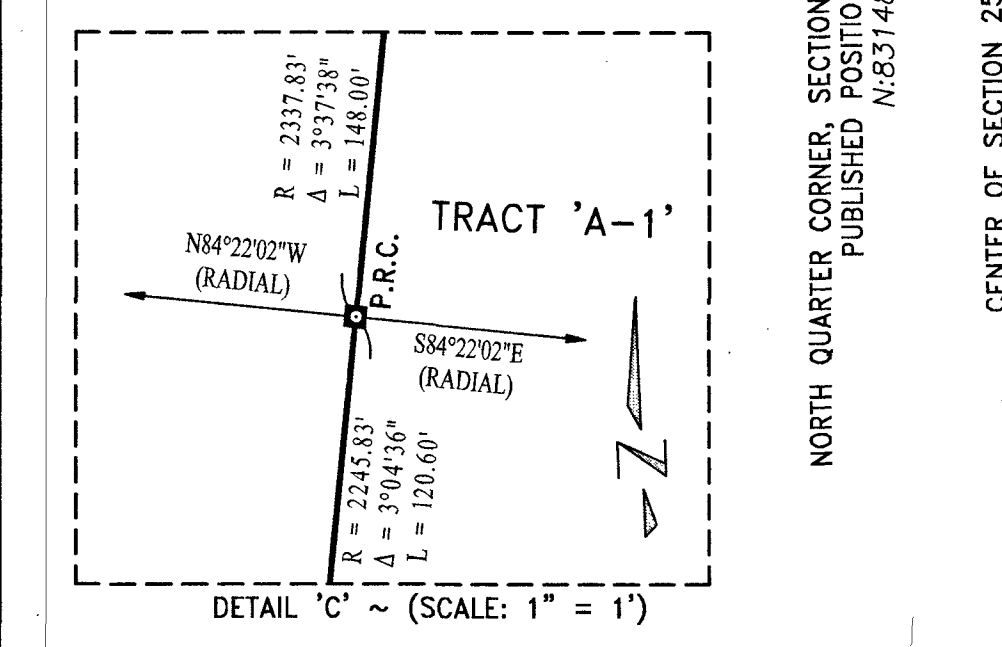
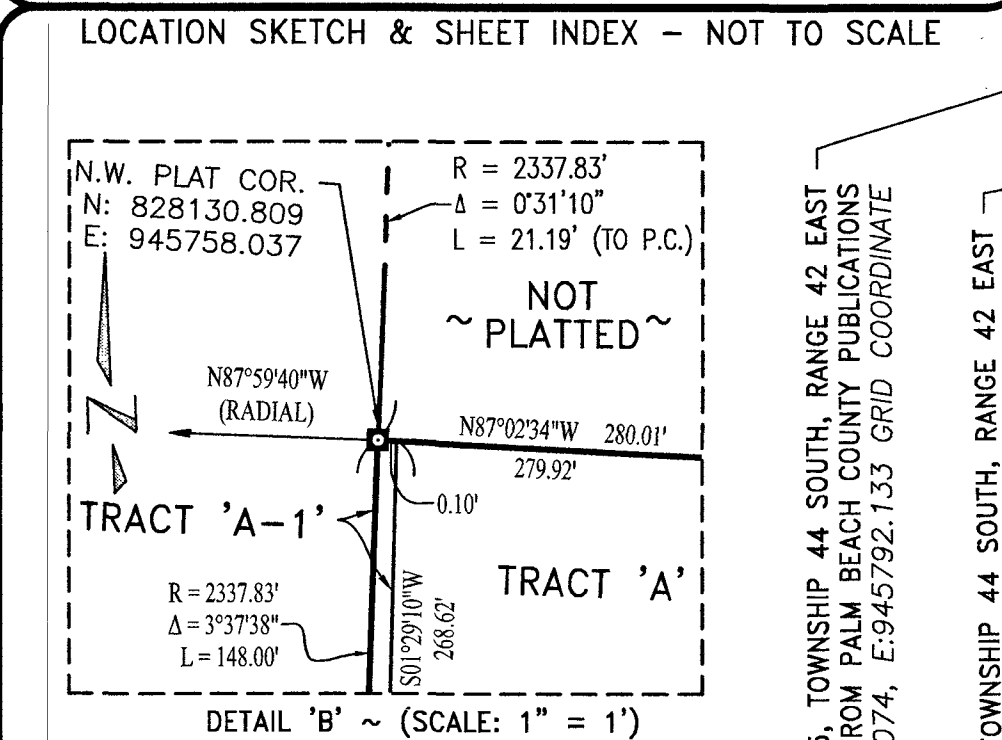
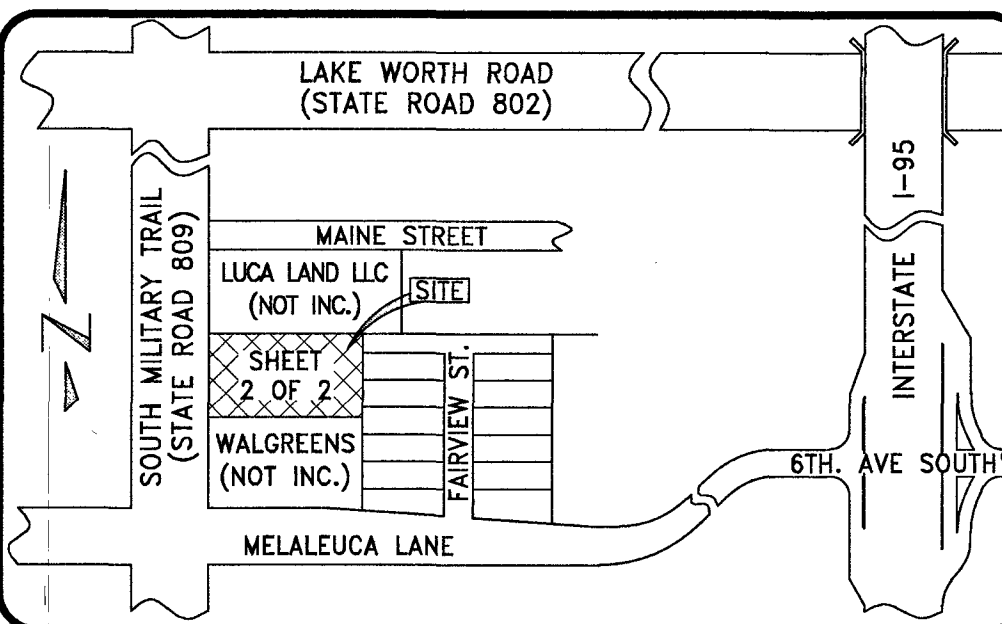


COBBLESTONE SQUARE

BEING A PLAT OF A PORTION OF THE SOUTHWEST ONE-QUARTER OF THE NORTHWEST ONE-QUARTER OF THE SOUTHEAST ONE-QUARTER OF SECTION 25, TOWNSHIP 44 SOUTH, RANGE 42 EAST, PALM BEACH COUNTY, FLORIDA SHEET 2 OF 2

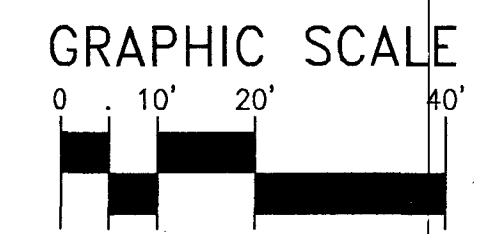
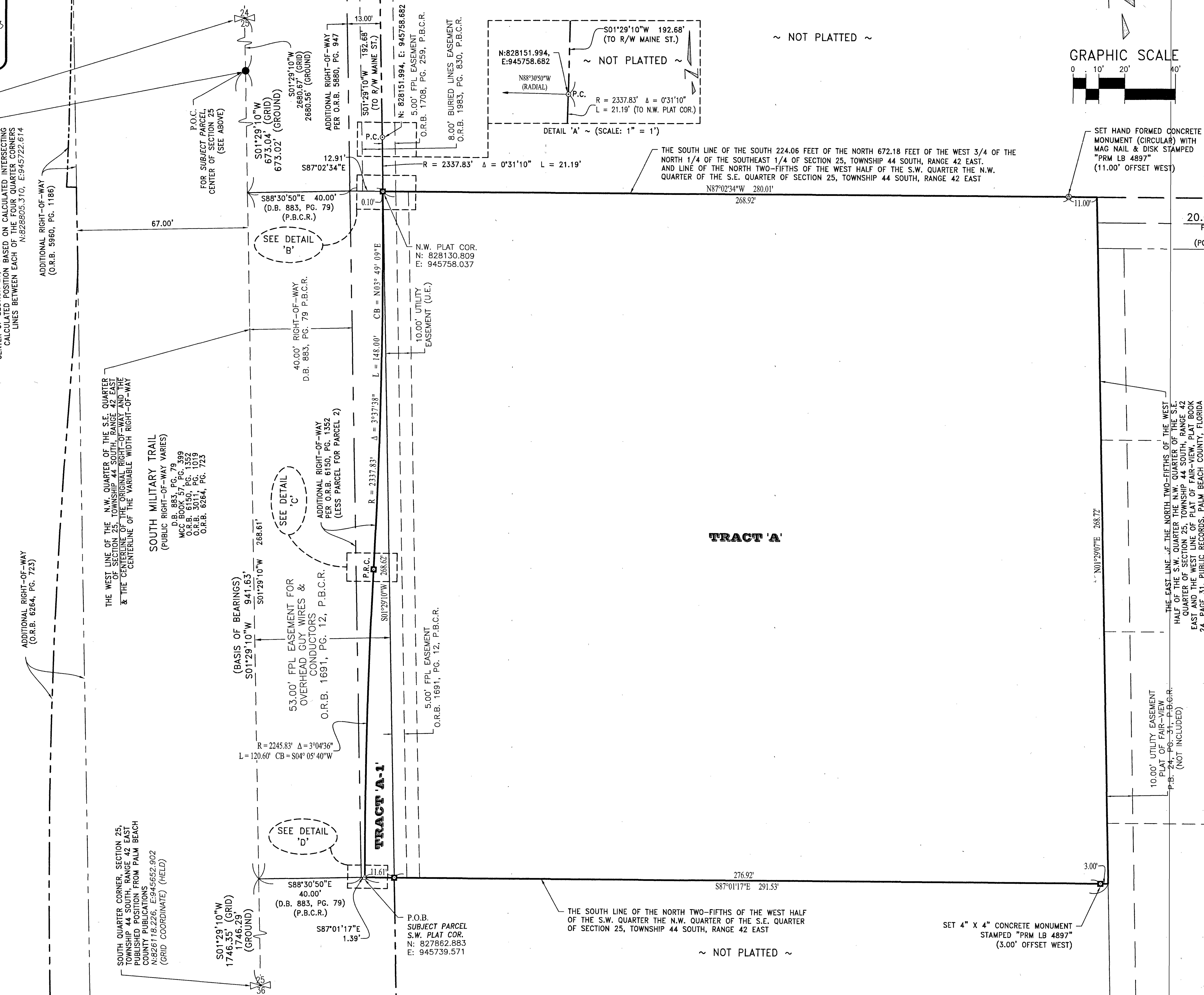
197



NOTES, COORDINATES, BEARINGS AND DISTANCES:
COORDINATES SHOWN ARE GRID DATUM = NAD 83 1990 ADJUSTMENT ZONE = FLORIDA EAST
LINEAR UNIT = US SURVEY FEET
COORDINATE SYSTEM 1983 STATE PLANE
TRANSVERSE MERCATOR PROJECTION
ALL DISTANCES ARE GROUND (UNLESS OTHERWISE NOTED)
SCALE FACTOR = 1.0000368
GROUND DISTANCE X SCALE FACTOR = GRID DISTANCE
BEARINGS AS SHOWN HEREON ARE GRID

LEGEND OF SYMBOLS:

| | |
|---|---------------------------------------|
| □ = 4"x4" CONCRETE MONUMENT STAMPED "P.R.M. LB4897" OR AS NOTED. | • = PROPERTY CONTROL ABBREVIATIONS |
| △ = MAG NAIL & DISK STAMPED "P.R.M. LB 4897" OR AS NOTED. | P.C.P. = PERMANENT CONTROL POINT |
| ⊙ = HAND FORMED CONCRETE MONUMENT (ROUND) WITH MAG NAIL & DISK STAMPED "P.R.M. LB 4897" | P.R.M. = PERMANENT REFERENCE MONUMENT |
| | CONC. = CONCRETE |
| | MON. = MONUMENT |
| | M.N.D. = MAG NAIL & DISK |



SET HAND FORMED CONCRETE MONUMENT (CIRCULAR) WITH MAG NAIL & DISK STAMPED "PRM LB 4897" (11.00' OFFSET WEST)

THE EAST LINE OF THE NORTH TWO-FIFTHS OF THE WEST HALF OF THE S.W. QUARTER OF SECTION 25, TOWNSHIP 44 SOUTH, RANGE 42 EAST AND THE WEST RECORDS, PALM BEACH COUNTY, FLORIDA

10.00' UTILITY EASEMENT PLAT OF FAIR-VIEW P.B. 24, PG. 31 - P.B.C.R. (NOT INCLUDED)

SET 4" x 4" CONCRETE MONUMENT STAMPED "PRM LB 4897" (3.00' OFFSET WEST)

LEGEND OF ABBREVIATIONS:

| | | | |
|----------------|---------------------------------|-------------------------------|---|
| ° = DEGREES | CB = CHORD BEARING | T = TANGENT | PG. = PAGE |
| ' = MINUTES | P.C. = POINT OF CURVATURE | N.T. = NON-TANGENT | P.O.C. = POINT OF COMMENCEMENT |
| " = SECONDS | P.T. = POINT OF TANGENCY | C.L. = CENTERLINE | P.O.B. = POINT OF BEGINNING |
| R = RADIUS | P.R.C. = POINT OF REVERSE CURVE | P.B. = PLAT BOOK | P.O.T. = POINT OF TERMINUS |
| Δ = DELTA | RAD. = RADIAL | D.B. = DEED BOOK | L.B. = LICENSED BUSINESS COMPANY |
| L = ARC LENGTH | N.R. = NON-RADIAL | MOC = MINUTES CIRCUIT COURT | P.S.M. = PROFESSIONAL SURVEYOR & MAPPER |
| | | O.R.B. = OFFICIAL RECORD BOOK | |

LEGEND OF ABBREVIATIONS:

| | |
|---|---|
| L.A.E. = LIMITED ACCESS EASEMENT | D.E. = DRAINAGE EASEMENT |
| L.B.E. = LANDSCAPE BUFFER EASEMENT | U.E. = UTILITY EASEMENT |
| L.M.E. = LAKE MAINTENANCE EASEMENT | FPL = FLORIDA POWER & LIGHT COMPANY |
| S.L.E. = SANITARY SEWER LINE EASEMENT | L.B. = LICENSED BUSINESS COMPANY |
| W.L.E. = WATER LINE EASEMENT | L.W.D.D. = LAKE WORTH DRAINAGE DISTRICT |
| P.B.C.U.E. = PALM BEACH COUNTY UTILITY EASEMENT | |

KESHAVARZ & ASSOCIATES
Civil Engineers • Land Surveyors
711 North Dixie Highway, Suite 201
West Palm Beach, Florida 33401
Tel: (561) 689-8000 Fax: (561) 689-7476

THIS INSTRUMENT WAS PREPARED BY SCOTT F. BRYSON, IN AND FOR THE OFFICES OF KESHAVARZ & ASSOCIATES, INC. 711 NORTH DIXIE HIGHWAY, SUITE 201, WEST PALM BEACH, FLORIDA 33401 TELEPHONE (561) 689-8600.

| | | | |
|----------------|--------------------|-------------|-----------|
| DATE 06/03/22 | CHECKED SFB | PROJECT No. | SHEET No. |
| SCALE 1" = 20' | APPROVED SFB | 21-1382 | 2 OF 2 |
| DRAWN SFB | DWG No: D21-1382PL | | |